

SAVE TIME AND HASSLE!

Fibermesh[®] fibrous concrete is the one-step micro-reinforcement system from your Ready Mix Supplier.



“Place your secondary reinforcement while you place your concrete — automatically”



Making Good Concrete Better



FIBERMESH[®] fibers are
engineered for concrete in
compliance with building
codes* . . . to provide top-to-
bottom, side-to-side uniform
reinforcement as a cost-effective
and superior alternate system of
secondary reinforcement.

*Council of American Building Officials Report No. NER-284
Classified Underwriters Laboratories



Major Fibermesh® Benefits:

- **Offers no obstruction to subbase traffic**
- **Always positioned in compliance with codes . . . automatically**
- **Pumps easily**
- **Reduces plastic shrinkage and plastic settlement cracking**
- **Increases abrasion resistance and can't rust**
- **Reduces water migration and corrosion of embedded steel**
- **Increases concrete durability and toughness**
- **Provides impact resistance and fatigue resistance**
- **Compatible with all types of surface treatments**

FIBERMESH® fibrous concrete saves time and labor



High-rise Buildings, Industrial Plants, Warehouses.

Whether pumped or conventionally placed, Fibermesh increases the abrasion and impact resistance of concrete.

Restaurants, Malls, Concourses.

Wherever esthetic qualities and lasting durability are prime concerns, Fibermesh enhances colored, exposed aggregate and stamped pattern concrete. Fibermesh can't rust or stain surfaces— it's non-corrosive, alkali resistant.



Parking and Commercial Structures.

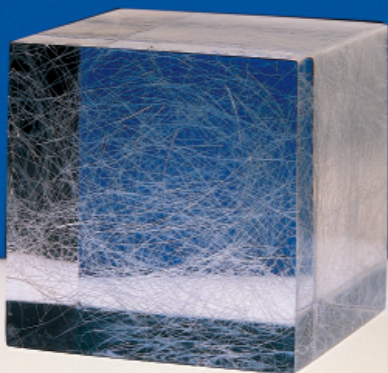
Fibermesh concrete durability is increased, lessening passage of water and deicing salts to cause rebar corrosion problems.

Pavement and Overlays, Parking Areas, Bridge Decks, UTW.

Concrete enhanced with Fibermesh reinforcement contributes greatly to increased life and serviceability. Reduced plastic shrinkage cracking and water migration help protect embedded steel.



How Fibermesh® works . . .



If you could look into a cube of Fibermesh fibrous concrete, this is what you would see: Millions of polypropylene Fibermesh fibers uniformly distributed in all directions throughout the concrete mix. As micro cracks begin to develop due to water loss and shrinkage, the cracks intersect with Fibermesh fibers which block their growth and provide higher tensile strength capacity at this crucial time. So, the cracks don't develop into macro cracks and problems. This has been proven in test after test in independent laboratories and verified on jobsites throughout the world.

Fibermesh fibrous concrete is easy to work with
Fibermesh fibers provide concrete reinforcement without affecting

- Mix design and additives
- Pumpability
- Placing, set times or finishing

The one-step, state-of-the-art micro-reinforcement system that can't be misplaced in concrete.

Benefits of secondary reinforcement

Features	Fibermesh® (micro)	Wire Mesh
Reinforces against plastic shrinkage crack formation	Yes ✓	No
Reinforces against impact forces	Yes ✓	No
Reinforces against shattering	Yes ✓	No
Reinforces against abrasion	Yes ✓	No
Reinforces against water migration	Yes ✓	No
Rustproof and corrosion resistant	Yes ✓	No
Non-magnetic	Yes ✓	No
Minimum required concrete cover	-0-	1"
Always positioned in compliance with codes	Yes ✓	No
Safe and easy to use	Yes ✓	No



SI Concrete Systems

4019 Industry Drive • Chattanooga, TN 37416
 800-621-0444 • fax 423-899-7619
www.fibermesh.com

FM-114
 © SI 1987, 2000
 Printed in U.S.A.